



ASIAN POWER DEVICES

**TOP-NOTCH TECHNICAL
CAPABILITIES,
SATISFYING DIVERSE
MARKET NEEDS.**

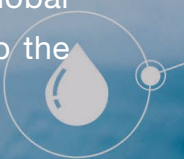


Medical Power Supply

Leader of power electronics and renewable energy technology

Asian Power Devices (APD) , founded in Taiwan in 1994, focuses on power electronics and photovoltaics technologies. It occupies an important position in the global market with its world-known technology development ability and highly competitive products and services.

APD products include power supply and PV inverter. Besides targeting critical technology development and striving for highly efficient production and service, APD is committed to continuous innovation and sustainable operations, becoming a key player in the power electronics and photovoltaics industry in the global market. With highly efficient energy saving technology, APD hopes to help the society realizes a green future.



IDP 65943-08

OPD 832-R2



Medical Power Supply Solutions

Stable, reliable, high quality, customized design

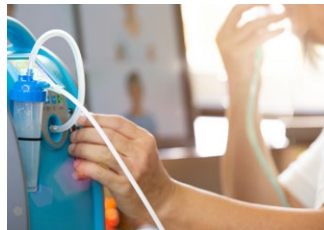
For years APD has been devoted to power supply for medical products based on its superior quality, stability and reliability. APD excels at providing customized design exactly tailored to customer needs to satisfy diverse requirements of medical products to continue to develop competitive advantage products with customers.

APD has acquired numerous international certifications and constantly enhances its product quality and technical capabilities through certification and implementation of quality systems. APD passed the ISO 13485 medical device quality management system certification in 2015. Medical power supply products in all series comply with IEC 60601, the medical device safety standard. The product specifications are diverse. The output power and voltage are suitable around the world. Thus, APD can provide green power supply products that are safer and have higher efficiency and lower power loss.

Product applications



Ventilator / CPAP



Oxygen Concentrator



High Flow Nasal Cannula



Patient Monitor



Infusion Pump



IVD



Endoscope



Ultrasound



Patient Bed



Electric Wheelchair



Aesthetic Device



Hair Removal Device

Wall-Mounted



- Complies with IEC60601-1, IEC 60335-1
- 2 x MOPP
- High peak power design
- IP22 Ingress Protection Rating
- Low ripple & noise
- Multiple protection functions
- AC plugs for numerous countries are available



Desktop



- Complies with IEC 60601-1, IEC 60335-1
- 2 x MOPP
- High peak power design
- IP22 Ingress Protection Rating
- Low ripple noise
- Multiple protection functions
- C6 / C8 / C14 input inlet are available



Open Frame



- Complies with IEC60601-1, IEC 60335-1
- 2 x MOPP
- Efficiency DoE & CoC
- Excellent EMC characteristics
- High Reliability
- Multiple protection functions
- Supports class I or class II input construction

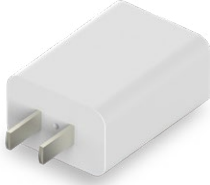


**HIGH PERFORMANCE,
ENERGY EFFICIENCY,
RELIABILITY & FLEXIBILITY**

Wall-Mounted

USB-05

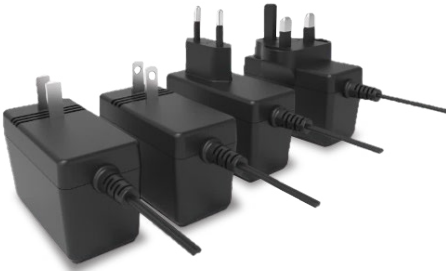
LxWxH : 52 x 38 x 24.5mm



Product	Output Voltage	Output Current	Power	Model
USB-05	5V	1.00A	5W	WA-05S05
	5V	2.00A	10W	WB-10R05

WA-05 , WA-09 , WA-24 , WA-30

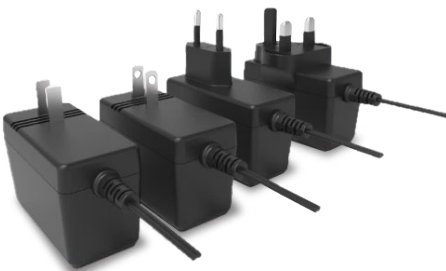
LxWxH : 70 x 33 x 43.5mm



Product	Output Voltage	Output Current	Power	Model
WA-05	5V	2.00A	10W	WB-10Q05
	5V	3.00A	15W	WA-15K05
	5V	4.00A	20W	WA-20F05
WA-09	9V	1.00A	9W	WA-09C09
	9V	2.00A	18W	WA-18E09
	9V	3.00A	27W	WA-27A09
	9V	3.33A	30W	WA-30A09*
WA-24	12V	2.00A	24W	WA-24B12
	15V	1.60A	24W	WA-24F15
	19V	1.26A	24W	WA-24F19
	24V	1.00A	24W	WA-24F24
WA-30	12V	2.50A	30W	WA-30N12*
	15V	2.00A	30W	WA-30F15
	19V	1.58A	30W	WA-30F19
	24V	1.25A	30W	WA-30F24

WA-30* , WA-36 , WA-42

LxWxH : 70 x 33 x 49.5mm



Product	Output Voltage	Output Current	Power	Model
WA-36	12V	3.00A	36W	WA-36Y12
	15V	2.40A	36W	WA-36B15
	19V	1.89A	36W	WA-36A19
	24V	1.50A	36W	WA-36B24
WA-42	12V	3.50A	42W	WA-42G12
	15V	2.80A	42W	WA-42A15
	19V	2.21A	42W	WA-42B19
	24V	1.75A	42W	WA-42A24

Desktop

DA-48 , DA-60 , DA-65

LxWxH : 120 x 52 x 30.5mm

AC Socket : C8 / C6 / C14



Product	Output Voltage	Output Current	Power	Model
DA-48	12V	4.00A	48W	DA-48L12
	15V	3.20A	48W	DA-48A15
	19V	2.53A	48W	DA-48J19
	24V	2.00A	48W	DA-48P24
DA-60	12V	5.00A	60W	DA-60K12
	15V	4.00A	60W	DA-60A15
	19V	3.16A	60W	DA-60M19
	24V	2.50A	60W	DA-60L24
	29V	2.00A	60W	DA-60A29*
DA-65	15V	4.33A	65W	DA-65A15
	19V	3.42A	65W	DA-65L19
	24V	2.71A	65W	DA-65M24

DA-60* , DA-80 , DA-90 , DA-120

LxWxH : 145 x 63.2 x 32mm

AC Socket : C8 / C6 / C14



Product	Output Voltage	Output Current	Power	Model
DA-80	12V	6.67A	80W	DA-80B12
	15V	5.33A	80W	DA-80A15
	19V	4.21A	80W	DA-80C19
	24V	3.33A	80W	DA-80D24
	28V	2.86A	80W	DA-80B28
DA-90	12V	7.50A	90W	DA-90A12
	15V	6.00A	90W	DA-90A15
	19V	4.74A	90W	DA-90N19
	24V	3.75A	90W	DA-90M24
	28V	3.21A	90W	DA-90C28
	29V	3.00A	90W	DA-90A29

DA-120* , DA-150

LxWxH : 175 x 85 x 40mm

AC Socket : C8 / C6 / C14



Product	Output Voltage	Output Current	Power	Model
DA-120	12V	10.00A	120W	DA-120B12*
	15V	8.00A	120W	DA-120B15*
	19V	6.32A	120W	DA-120H19*
	24V	5.00A	120W	DA-120E24
	28V	4.29A	120W	DA-120B28
DA-150	15V	10.00A	150W	DA-150B15
	19V	7.89A	150W	DA-150H19
	24V	6.25A	150W	DA-150G24

DA-180 , DA-200

LxWxH : 175 x 85 x 40mm

AC Socket : C6 / C14

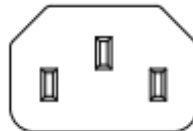


Product	Output Voltage	Output Current	Power	Model
DA-180	18V	9.47A	180W	DA-180E19
	24V	7.50A	180W	DA-180C24
DA-200	24V	8.33A	200W	DA-200A24

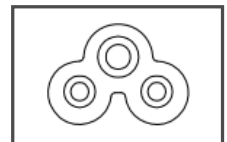
AC Socket



C8



C14



C6



Open Frame

FP-20 , FP-24 , FP-30

LxWxH : 76.2 x 50.8 x 26.1mm

Type : Fanless



FP-35 , FP-40 , FP-45 , FP-50

LxWxH : 76.5 x 50.8 x 27.1mm

Type : Fanless



FP-55 , FP-60 , FP-65 , FP-70

LxWxH : 76.2 x 50.8 x 27.1mm

Type : Fanless



Product	Output Voltage	Output Current	Power	Model
FP-20	12V	1.67A	20W	FP-20A12
	15V	1.33A	20W	FP-20A15
	19V	1.05A	20W	FP-20A19
	24V	0.83A	20W	FP-20A24
FP-24	12V	2.00A	24W	FP-24F12
	15V	1.60A	24W	FP-24A15
	19V	1.26A	24W	FP-24A19
	24V	1.00A	24W	FP-24A24
FP-30	12V	2.50A	30W	FP-30D12
	15V	2.00A	30W	FP-30B15
	19V	1.58A	30W	FP-30A19
	24V	1.25A	30W	FP-30A24

Product	Output Voltage	Output Current	Power	Model
FP-35	12V	2.92A	35W	FP-35A12
	15V	2.33A	35W	FP-35A15
	19V	1.84A	35W	FP-35A19
	24V	1.46A	35W	FP-35A24
FP-40	12V	3.33A	40W	FP-40C12
	15V	2.67A	40W	FP-40A15
	19V	2.11A	40W	FP-40A19
	24V	1.67A	40W	FP-40A24
FP-45	12V	3.75A	45W	FP-45A12
	15V	3.00A	45W	FP-45A15
	19V	2.37A	45W	FP-45A19
	24V	1.88A	45W	FP-45A24
FP-50	12V	4.17A	50W	FP-50A12
	15V	3.33A	50W	FP-50B15
	19V	2.63A	50W	FP-50A19
	24V	2.08A	50W	FP-50C24

Product	Output Voltage	Output Current	Power	Model
FP-55	12V	4.58A	55W	FP-55A12
	15V	3.67A	55W	FP-55A15
	19V	2.89A	55W	FP-55A19
	24V	2.29A	55W	FP-35A24
FP-60	12V	5.00A	60W	FP-60C12
	15V	4.00A	60W	FP-60A15
	19V	3.16A	60W	FP-60A19
	24V	2.50A	60W	FP-60A24
FP-65	12V	5.42A	65W	FP-65A12
	15V	4.33A	65W	FP-65A15
	19V	3.42A	65W	FP-65A19
	24V	2.71A	65W	FP-65A24
FP-70	12V	5.83A	70W	FP-70B12
	15V	4.67A	70W	FP-70A15
	19V	3.68A	70W	FP-70A19
	24V	2.92A	70W	FP-70A24

FP-80 , FP-90 , FP-100

LxWxH : 101.6 x 50.8 x 32.6mm

Type : Fanless



Product	Output Voltage	Output Current	Power	Model
FP-80	12V	6.67A	80W	FP-80A12
	15V	5.33A	80W	FP-80A15
	19V	4.21A	80W	FP-80A19
	24V	3.33A	80W	FP-80B24
FP-90	12V	7.50A	90W	FP-90A12
	15V	6.00A	90W	FP-90A15
	19V	4.74A	90W	FP-90A19
	24V	3.75A	90W	FP-90B24
FP-100	12V	8.33A	100W	FP-100A12
	15V	6.67A	100W	FP-100A15
	19V	5.26A	100W	FP-100B19
	24V	4.17A	100W	FP-100E24

FP-120 , FP-150

LxWxH : 127 x 76.2 x 31.8mm

Type : Fanless



Product	Output Voltage	Output Current	Power	Model
FP-120	12V	10.00A	120W	FP-120A12
	19V	6.32A	120W	FP-120A19
	24V	5.00A	120W	FP-120A24
FP-150	15V	10.00A	150W	FP-150A15
	19V	7.89A	150W	FP-150B19
	24V	6.25A	150W	FP-150A24

FP-200

LxWxH : 101.6 x 50.8 x 29.5mm

Type : Fan



Product	Output Voltage	Output Current	Power/ Fan	Power/ Fanless	Model
FP-200	12V	16.67A	200W	150W	FP-200A12
	15V	13.33A	200W	150W	FP-200A15
	19V	10.53A	200W	150W	FP-200A19
	24V	8.33A	200W	150W	FP-200A24

FP-500

LxWxH : 101.6 x 50.8 x 29.5mm

Type : Fan



Product	Output Voltage	Output Current	Power	Model
FP-500	12V	25.00A	300W	FP-300A12
	19V	21.05A	400W	FP-400A19
	24V	20.83A	500W	FP-500A24

Customized Power Supply



Adapter

80W Customized Case

Power	80W
Content	<ol style="list-style-type: none">1. Unique shell ID design2. Exclusive DC plug3. Customized electrical characteristic



Open Frame

60W Customized Case

Power	60W
Content	<ol style="list-style-type: none">1. Special PCB size design2. Exclusive AC or DC plug3. Customized electrical characteristic



Rack Mount

490W Customized Case

Power	490W
Content	<ol style="list-style-type: none">1. Special construction design2. Exclusive AC or DC plug3. Customized electrical characteristic

**HIGH PERFORMANCE,
ENERGY EFFICIENCY,
RELIABILITY & FLEXIBILITY**

OUR CUSTOMERS' TRUST IS BASED ON OUR ENDLESS PURSUIT OF QUALITY

Main Specifications:

Power range	5 ~ 500W
Input voltage range	90 ~ 264V
Output voltage	5V ~ 36V

Certifications:

Company passed ISO 13485 certification.

Products met IEC/UL 60601 and UL 2089 standards.



INSTILL NEW VIGOR TO INNOVATE



ASIAN POWER DEVICES

Headquarters

ASIAN POWER DEVICES INC.

12F., No.97, Sec. 1, Xintai
5th Rd., Xizhi Dist., New
Taipei City 221416, Taiwan
TEL: +886-2-2697-6679
FAX: +886-2-2697-5579

Global Locations

APD Taiwan R&D Center

No.5, Ln. 83, Longshou St., Taoyuan
Dist., Taoyuan city 330035, Taiwan
TEL: +886-3-379-9078
FAX: +886-3-379-9263

APD Shenzhen DK Inc.

C101-C801 Block C, LGIS Science
Innovation Building, No.2 Shanshui
Road, Yuanshan Street, Longgang
District, Shenzhen, China
TEL : +86-755-2860-7677

APD Sales Office

9F, No. 423-10, Zhengguang Rd.,
Taoyuan District, Taoyuan city 33060,
Taiwan
TEL: +886-3-370-0910
FAX: +886-3-370-0915

APD Vietnam Plant

No. F4C2, Thang Long Vinh Phuc
IP, Tam Hop Commune, Binh Xuyen
District, Vinh Phuc Province, Vietnam.
TEL: +84-21-1388-2968

APD Taipei Plant

3F, No.211, Nanyang St., Xizhi Dist.,
New Taipei City 221009, Taiwan
TEL: +886-2-2693-3298
FAX: +886-2-2693-1009



www.apd.com.tw/en
Corporate Website

April, 2025

